



The Kamshaft

March 2023

VCCC – Kamloops Chapter Newsletter Box 239 Kamloops, BC V2C 5K6

Email kamshafteditor@gmail.com

Editor: Dave Dickinson

National Website: www.vccc.com

----- Next Issue Deadline for Classifieds & News– April 14th -----

----- May Issue Deadline for Classifieds & News May 12th- -----

Vol. 51 No. 3



EASTER

**COME JOIN US
SUNDAY APRIL 9TH**



Calendar of Events

** Kamloops Chapter Events*

- *Mar 21st Coffee Break (10:30am Aberdeen mall)
- *Mar 22nd General Meeting **[4th Wednesday not the 5th]**
- *Apr 9th EASTER DRIVE to Riverside Park
- Apr 29th South Okanagan Swap Meet Oliver
- *Apr 30th Adopt A Road

EDITOR'S EDITORIAL



Not much to say this time around.

Hoping that you can give Rich a hand on Easter Sunday as it takes more than one person to pull off this Drive.

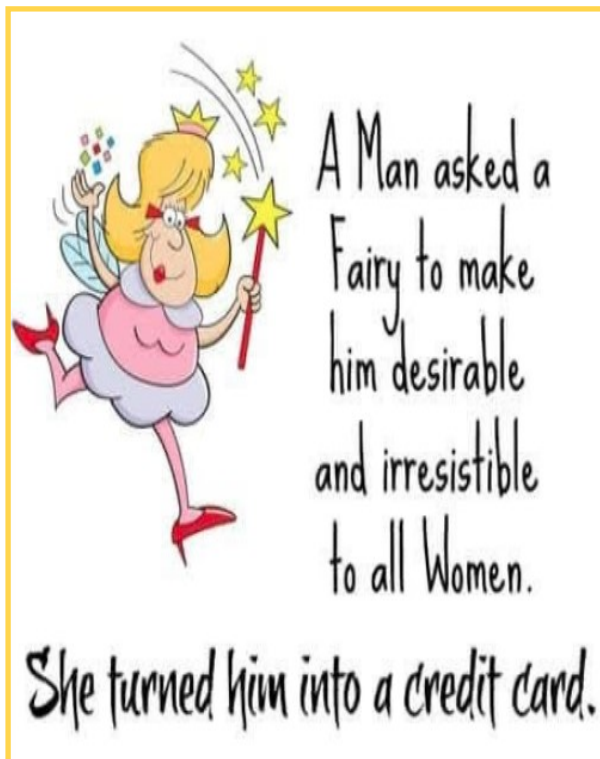
You can get pick up your 2023 Club Roster as they will be available at the March General Meeting



Coffee Breaks—I have been asked why we do not do it at 10:30 am every Tuesday as the mall is open. It is okay with me if that is what the members want. However I am not certain that I could attend all of them.

A reminder that Jim is still looking for suggestions of things to do on a Cruise Night.

Adopt A Road is going to be Sunday April 30 with picnic lunch to follow at the Ranch. If you have not made it out in the past mark it on your calendar as it is a thing to do as it is fun.



The cashier told me “Strip
Down Facing Me”.

By the time I realized they
meant the debit card, it
was too late.



Elaine Jones is our sunshine lady.

If you know a member that could use a ray of sunshine contact

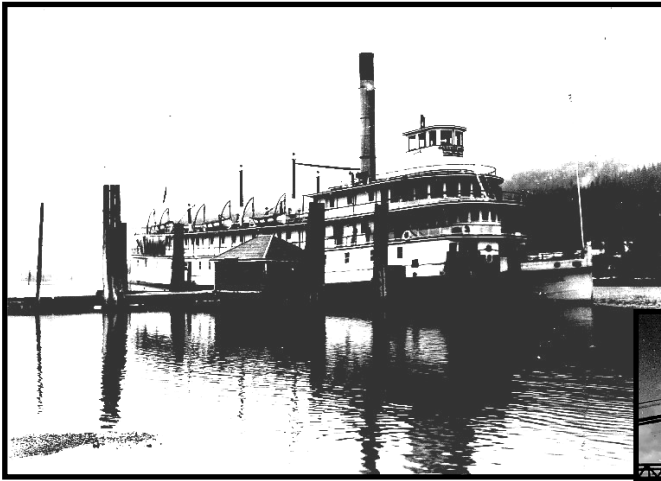
Elaine at 778 470 0369

Elaine sent a Get Well to Julian Slotylak

PADDLE WHEELERS IN BC

Thanks to Keith Barron for providing us with an interesting history of paddle wheelers here in BC at the February general meeting.

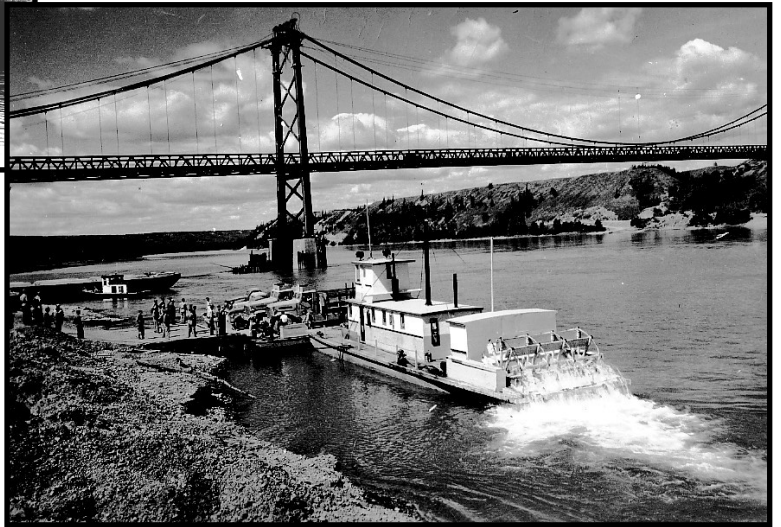
As I had these two photos I thought I would make some comments.



This is a picture of the US Army built a diesel paddler for tug service on the Peace River in 1942. It worked on the raising of the Peace River Bridge shown here, This bridge is the relocated and exiled bad boy bridge that collapsed at the Tacoma Narrows. It promptly collapsed again in 1957.

It is hard to see in the picture however the trucks on the barge were army trucks as this was at the time the Alaska Highway was being built. (1942-43).

Before this ferry there was one called the D A Thomas that ran on the river from the Fort St John area to Peace River, Alberta. I am not sure of the years however Noella told me that her dad (Martin deWit) was part of the crew that cut and hauled wood by horse teams down to the river bank so they could get fuel as it went up and down the river. Editor



With the upcoming Kamloops Chapter VCCC participation in Show and Shines you might want to have a window banner on your windshield describing your car. The one I have for my car is shown here.

I have made a template and can insert the information for your car.

If you would like one, send me the details (hosh1941@telus.net) and I will prepare the banner and email it to you.

If you want it plasticized take it to Staples for a cost of about \$4.00.



VINTAGE CAR CLUB
OF CANADA

KAMLOOPS CHAPTER

1994 Cadillac Eldorado Touring

V8 4.6 L 295 HP Front Wheel Drive

OWNED BY KEN AND MARGE HOSHOWSKI
KAMLOOPS





Canadian Coasters Tour Part #7 - by Marlene Beddie

Saturday August 6th, after a bit of haggling over the overcharges on our guaranteed room rates, we headed off to Sault Ste. Marie about 246km away. Although Highway 17 travels along Lake Huron, not too many opportunities were presented to actually pull off at a view point to see the lake unless one drove into some of the smaller communities along the way.



Between Espanola and Suite St. Marie, we did come across an Amish buggy and horse travelling in the gravel lane along the highway but did not ever see their community. Just before Suite St. Marie, we ventured onto St Joseph island, population 2300, with two communities: Richards Landing and Hilton Beach. It is the most western island of the Manitoulin Chain of Islands. It is located in



the channel between Lake Huron and Lake Superior. We crossed the bridge that joined the island to the mainland with the intent of having lunch in Richard Landing but it was packed so we continued on to Hilton Beach--a very resort looking area with a marina and boardwalk which we got out at and walked to stretch our legs. Some very nice looking boats/yachts. As for beach, what we could see, there wasn't much of a beach, just the marina. On the way back to Highway 17, we stopped and had a picnic lunch at a picnic area at the northern end of the bridge. It was lovely--peaceful. A couple people were fishing off the rocks. It was a bit windy though and we had to make sure things were held down so they wouldn't blow over. From there we continued on into Sault St. Marie and checked in to our motel. After checking in, Craig decided to look for a place to get the chip in the window as he was afraid it would start running especially in the heat. At the Canadian Tire, he spotted one of those orange tents of Deco and the fellow there fixed it as best he could. It was a very big star bruise. At least it wasn't going to go anywhere after. No events happening that evening so we just had dinner and retired for the night.

Sunday August 7th, we had an early breakfast with the rest of the motellers at a local restaurant just down the road from the motel. It was raining but about ½ hour after we left Suite St. Marie as we headed up the coast of Lake Superior to Wawa, it cleared up. This was a very scenic 230 km stretch of highway. We



had many glimpses of the lake and we took advantage of a number of the pullouts along the route to take in the spectacular views. A massive lake. More like looking at an ocean. With the sun out and the sky blue, it all looked so inviting. We did take a road off the main highway to Batchawana Bay to get close to the water. Nothing really there except a few residential homes, but at the end of this road, there was a stony beach which

we could kick up a few stones to admire, listen to the waves crashing in and try to keep the hair out of our eyes from the wind

Lots of wind! We went back and continued up the highway for another maybe 15 km and stopped at Agawa Crafts and the Canadian Carver shop /gas station/store/campsite place. The craft area had a wonderful display of wood carvings, Indian crafts/leather work/moccasins, and local art and crafts. As I didn't take any pictures, you can go to this link <https://www.algomacountry.com/partners/agawa-crafts-the-canadian-carver/> ; they have pictures of the craft area and you can see how beautiful the artwork is. In the store they were selling smoked fish and fish candy done locally. Of course we bought some of the fish candy. It was delicious. Just before Wawa, in our itinerary , it was suggested that we pay a visit to Magpie High Falls. However, after numerous bad attempts to get to the place, at the place where we finally asked for directions, we were told it was a rough gravel road into the fall area with a little hike to the falls. We decided gravel was not for us. Some of the other travellers did get to the falls and said that they were pretty; but, the more important part was that there were wild blueberries that were available for picking. We arrived at Wawa just after noon, couldn't check in, so decided to go for lunch. The town was very quiet. Most businesses closed. Was it because it was Sunday or was it the after effects of the covid shut down or both? Pretty deserted looking. Only one restaurant opened for sit down meals who informed us they would not be open for dinner due to lack of staff.

After lunch we took pictures of the goose statues (3 of them). The one that greets visitors at the entrance to the town is



a metal sculpture 30 ft high with a wing span of 19 feet and weighs 4400 lbs. Of the other two –one is located at the



Young's General store and the other is on the roof of the motel we were staying at. We ventured into Young's General store and gas station; it was quite the store with just about anything you could want in souvenirs plus it had an array of t-shirts and sweatshirts/hoodies and moccasins ; in addition, it sold hard ice cream (Of course! We sampled!), homemade fudge, Grammy Mae's summer sausage and dill pickles from a keg of salty brine; and on top of that, it took care of fishing licences and hunting permits and had quite a display of fishing tackle. By the time we were finished touring the store, it was time to check in. And guess what? They had laundry facilities! So that is what I did for the remainder of the afternoon with one of the other motellers. She and I sat in the parking area and had a pleasant visit while sipping on a cold beer waiting for our laundry to finish. Very relaxing. For dinner, after having discovered no restaurants were open other than a pizza place that we could order out pizza only if we did so by 6pm, we motellers got together and had a pizza feast at the gazebo located in the back green space of the motel. After dinner, we wandered over to where the campers were parked at the nearby Wawa Community Center and had a visit with a few of the campers before retiring back to the motel for a night cap with a few of the motellers sitting outside our rooms. Nice way to end the day.



Monday August 8th our destination was Terrace Bay about 290 kms away. For those that wanted an early start, and needed gas or wanted to purchase any souvenirs before leaving Wawa, they were out of luck as the General store was closed until 11 much to the disappointment of one member's relative in BC or Alberta who was asked them to purchase some of the Grammy Mae's sausage when he found out they were in Wawa. Along the way we stopped for lunch at White River for lunch and to take in the worlds largest thermometer.



Funny thing about this was we were parked right in front of it when we went in for lunch wondering where it would be located; we did not see it until we were at the gas pumps (paying \$2.26/ liter – northern Ontario I guess didn't get the tax break) getting ready to leave. The roadway was quite pretty with lots of inaccessible little lakes along the route. When we arrived at Terrace Bay, we decided to carry on to Aguasabon Falls and Gorge about 10 km further west since we had time. It was a short maybe ¼ mile gentle downhill walk on a board walk to the falls and gorge—a very pretty meander down to the falls through the cool shaded forested



area. The platform at the bottom of the trail had a picturesque view of the falls and gorge. This provided us with a much needed and appreciated bit of exercise. On our return to Terrace Bay, we decided we should pick up some liquor at the LCBO. After getting directions, and getting there, we discovered it was closed on Sundays and Mondays—now why would that local person not tell us that!. At check in, we asked if there was a private liquor outlet and we were told that the hotel bar did off sales: not cheap -- a 12 pack of beer was \$45 and a 26'er of rum was a very good deal at \$75 the bar tender kept telling me. Needless to say, we didn't need any liquor that badly. Once we got checked in and got the car unloaded, we still had some extra time for a short nap before our drive to our preplanned buffet dinner at Filane's Italian Restaurant in the small community of Schreiber located about 30 km west of Terrace bay. It was very nice and it gave us a chance to mingle with some of the campers that sat at the same table with us.

After dinner, we decided to see what the full service community of Schreiber, population 1050, had to offer.

Marlene {to be continued}

Monthly Mystery Car #47

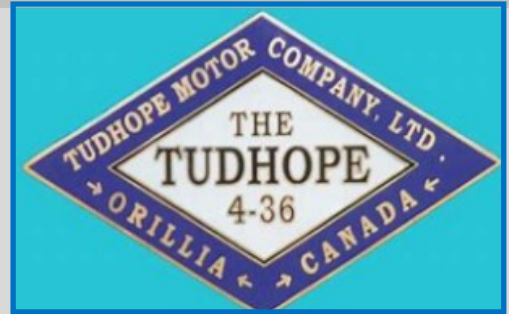
Presented by
Art Harms



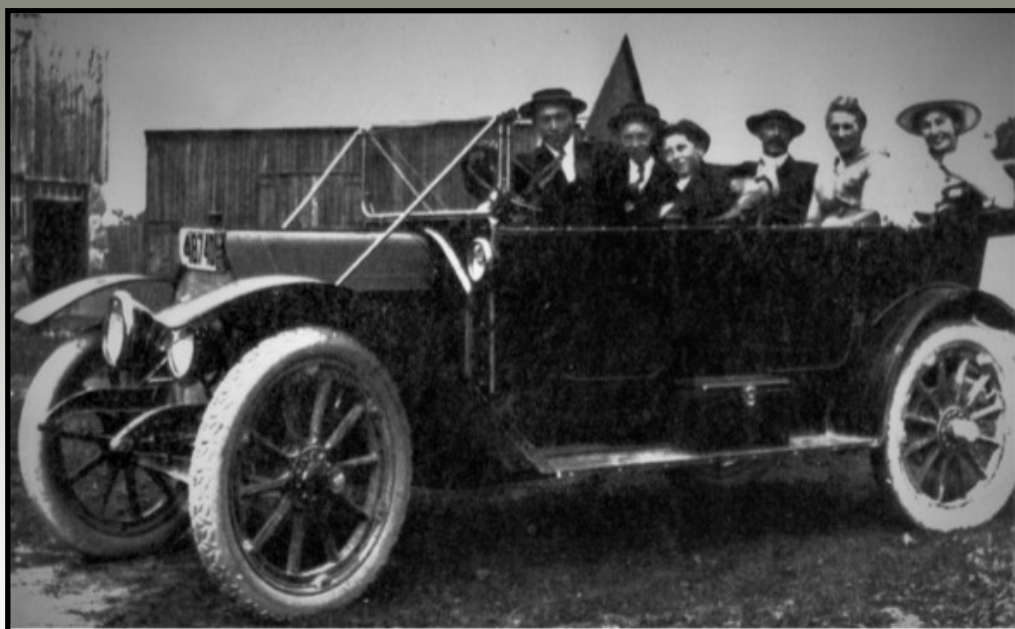
February Mystery Car

The February 2023 Mystery Car was a 1912 Tudhope 4-36. These Canadian automobiles were manufactured in Orillia, Ontario. The bodies were of a five passenger the four-door touring car style. In what the factory literature described as “wide rear seats, and roomy front seats”, were upholstered with black hand buffed leather. A large steering wheel was listed as a feature. The gas generator supplied the large head-lights, while the three carriage lights were oil (later production used electric lights and starter). The interior had foot rests, a robe rail, and a sight glass gas gauge. Even in those days there were optional extras, in this case a genuine Mohair top, a dust cover for the top, and brass windshield hardware. All for \$125.00 extra.

These cars were powered by a four-cylinder, flathead engine producing thirty six horsepower, hence the 4-36 Model name. Although there is very little information, it was listed as being self lubricating. Cooling was provided by a water pump and radiator system. Ignition was provided by a Bosch high tension magneto. Power was transmitted through a cone clutch to the rear transaxle. The transmission had three forward gears, and one reverse. A double drop frame was used to keep the car closer to the ground. The suspension for the car consisted of semi-elliptic springs on the front, and full elliptic springs on the rear. Brakes were provided on the rear only. Thirty four inch wood spoke wheels mounted with thirty four inch x three and a half inch tires, was standard on these automobiles.



The inspiration for this Mystery Car came from one of our Kamloops Vintage Car Club members, during our informal Tuesday morning coffee gatherings. Long time, young at heart member, Bob Chambers, brought in a family photo from years ago. The people in the picture are his grandfather Weston Roe Maguire and grandmother Betsy Jane (sitting in the rear seat) with their family, in their 1913 Tudhope car (notice the electric lights). I must say this sent me down a path of research to find out about a vehicle that I did not know existed. *Art Harms*



It is going to be a Happy Easter after all.

Hello Members I sure hope we get some warm weather soon !!!

We are still on schedule .10am staging at Mac Island near the ice arena . depart 11:45am

We hope to have coffee + cookies available at both Mac Island & Riverside.

The drive route may have some changes since there is construction scheduled on Fortune Dr. as well as Lorne St.

We Plan to have the cars on display at Riverside from 1pm till

around 4pm. **[Please No Early Bird Arrivals to the park]**

Please note the email from Lila that we need cookies. Thank you to those who signed up to help at the cookie tables. I will forward your names to John & Lila.

I still need 2 more people to assist with Parking each at Mac Island as well as Riverside Park.

Also 2 drivers are needed for the club vehicles. If you can help- please call John Bone 250 320 6626 or Craig Beddie 250 579 5340

Thanks *Rich* 250 320 8369





The Kamloops Chapter of the
Vintage Car Club of Canada

Come join us!

Easter Drive & Car Show

of Vintage Vehicles

Sunday April 9, 2023

10 am - Vehicles will stage at McArthur Island near ice arena.

11:45 am - Depart McArthur Island. Non-members welcome but only in vintage stock vehicles.

1-4 pm - Vehicles arrive at Riverside Park, and will be on display until 4pm. Coffee and cookies will be available by \$\$ donation at Mac Island as well as Riverside Park.



For further information call

Rich Vandermeij 250-828-2318 or Jim Carroll 250 374 7606

OLD PHOTO CORNER



Dad drove the Jewett around the streets of Regina with his dog (Sandy) riding on the front fender as shown in the picture.

Submitted by Mal Dixon

CLASSIFIEDS For Sale

Tools, Tools & More Tools

Whole Garage full. Prices from Free up to **\$5.00**

***Bob Gieselman 250 851 6387**

OMG! It's an AMG

1998 Mercedes gas 6 cyl 4 dr.

New tires & Muffler **\$2500.00** *Virgil 250 374 9690

Car Storage & Workshop

24x24sq ft heated, brick block insulated.
electrical in garage & workshop area, extra area upstairs. Long term or short term \$350 monthly

***Bob Gieselman 250 815 6387**

American Racing Mags [4] 7x15 with Torque

Thrust (w) new (Near) Cooper Cobra White letters

[2] 215/75R & [2] 225/75R Cost \$2000. now only

\$1000.00

Borg Warner 3 speed standard transmission with factory overdrive Drive shaft, bell housing and all electrical components **\$500.** [Fits mid 50's Ford Car

***Terry 250 579 8510 or htdavidson@shaw.ca**

A Thought to Remember Until Next Time:

Walmart is opening dental offices in some of its stores.

There will be an express lane for people with 12 teeth or less



6 Ton Bottle Jack **\$10.00**



Angle grinder **\$25.00**

Dave 250 371 4644 or hupdave@gmail.com